

# INTRODUCING

## FlexCrete Brand TCBs

(Thin Cladding Boards)



Fire Station No. 4 - Del Rio, TX

Navajo FlexCrete  
Building Systems, Inc.

Fiber Reinforced Aerated Concrete

[www.navajoflexcrete.biz](http://www.navajoflexcrete.biz)

FlexCrete Building Systems announces a revolutionary application for its 2" and 3" thick Cladding Boards (TCBs).

FlexCrete can now be screwed directly to the building's framing system -no pilot holes are required- to replace your sheathing system and to form a concrete substrate for stucco application.

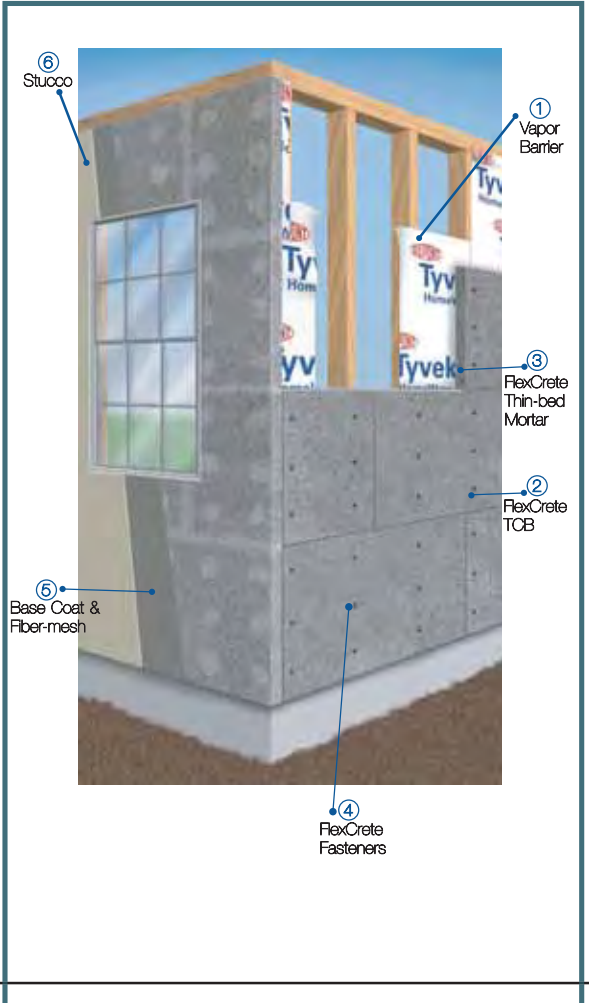


### Uses and applications

FlexCrete fiber-reinforced aerated concrete is now available in large, thin cladding boards (TCBs). These 2ft. x 4ft. boards are available in 2" and 3" thickness and are an excellent alternative to many popular stucco wall systems, such as conventional hard coat and EIFS.

FlexCrete Cladding Boards are used for a variety of applications, including:

- Exterior Wall Sheathing
- Sound Wall Component
- Retrofit Walls
- Fire Walls
- EIFS Replacement
- Fireproofing of Steel Columns



## Benefits

### ENVIRONMENTALLY FRIENDLY

FlexCrete TCBs are the "green" choice. Produced primarily from fly ash, a recovered resource, FlexCrete structures avoid these materials being disposed of in a landfill. High energy costs, normally associated with the manufacture of aerated concrete, are eliminated by curing at ambient temperatures.

### EASE OF USE

FlexCrete TCBs are lightweight and easy to handle and install. They can be drilled, cut and installed with common tools.

### SAFETY

Since they are non-combustible, FlexCrete TCBs offer excellent fire protection. The boards minimize the spread of fire and toxic fumes and carry a 2 hour Fire Endurance Rating per ASTM E119.

### ENERGY EFFICIENCY

Thanks to FlexCrete's superior heat insulation characteristics, our TCBs contribute to the building's overall energy efficiency.

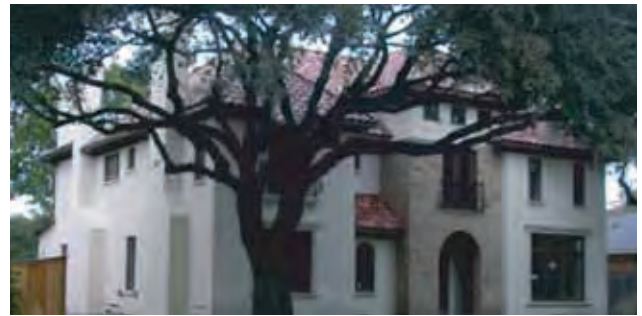


### DURABILITY

FlexCrete TCBs are resistant to mold, mildew and pests and provide an inherently hard surface which improves the wall's performance under high-impact conditions.

### RETROFIT SYSTEMS

FlexCrete TCBs are an excellent alternative for EIFS replacement and other retrofit applications, including historical renovation.



## You can count on us!

We stock the complete system

- Fasteners and adhesives
- Basecoats and acrylic finishes and hand tools
- Power tools.

We also offer:

- Training and engineering
- List of installers in your area.

## Navajo FlexCrete

Building Systems, Inc.

FlexCrete Building Systems, LLC, is part of the Headwaters Inc family of companies.

Headwaters is a market leader in designing, manufacturing and marketing building products for wall construction. With manufacturing facilities throughout the United States and its own national distribution network, Headwaters is one of the largest manufacturers of construction materials in the country.

1950 Industrial Drive  
Page, Arizona 86040  
tel: 928.608.4801  
fax: 928.608.4802

[www.navajoflexcrete.biz](http://www.navajoflexcrete.biz)

